

« » 15 2013 .

1996-2013 Medline (Pubmed version), Embase (Dialog version) Cochrane Library databases, : Guideline AASLD 2008 (American Association for the Study of Liver Diseases) Guideline EASL 2011 (European Association for the Study of the Liver).

10:

83.0

7,5

500

7 ,

3207C>A (H1069Q)

13 (13q14.3-q21.1),

21

7 ,

380

1:30000 1:100000, 1:90.

14. 7 50-80%

	0,290		0,060
	0,240		0,047

- 2-4

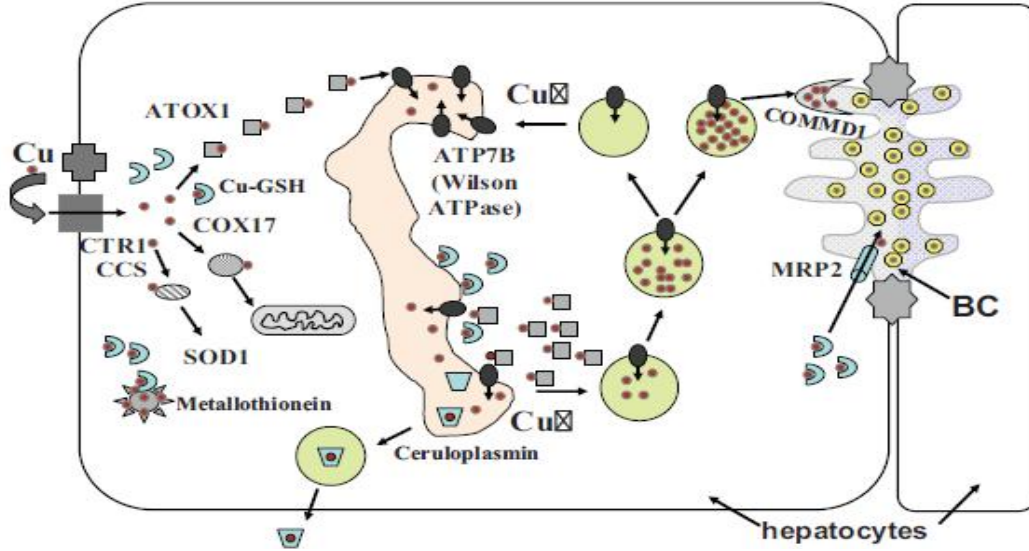
- 5 ()

(1 /)

200 /

- 7

(.1).



.1.

(.2)

5-

2-

3-

5

26%.

4 ,

- 2 .

, .

, , , - ,

,

.

,

.

,

,

,

.

(44%)

.

.

(,),

,

(.2-4).

,

-

,

,

.

,

,

,

,

,

.

,

,

.

(

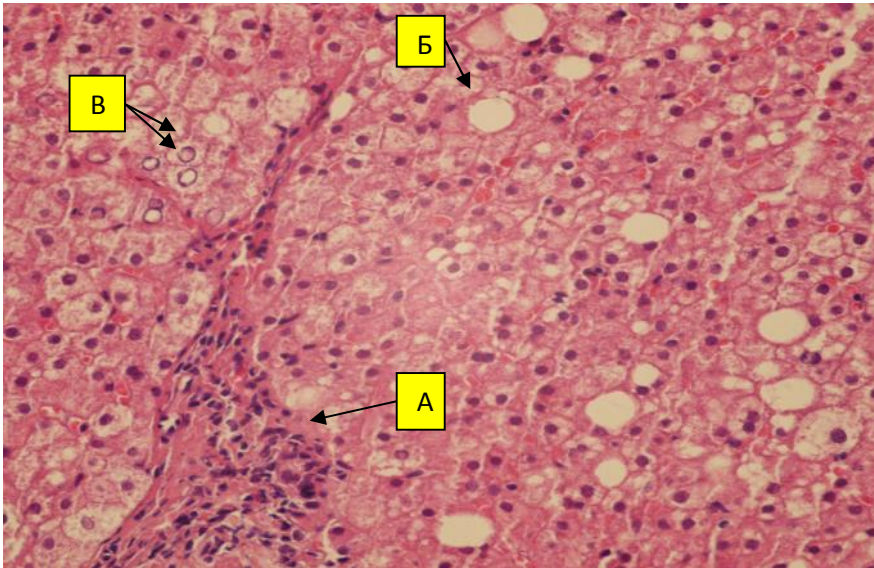
,

,

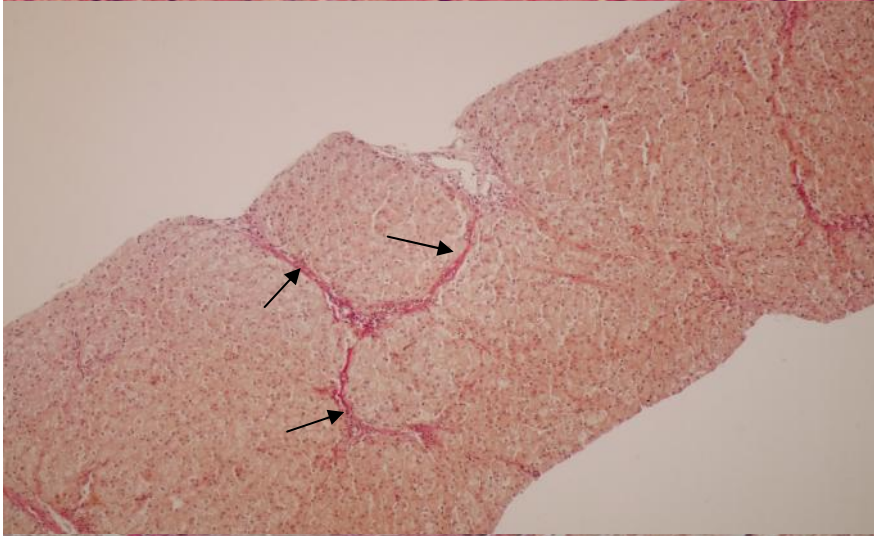
,

),

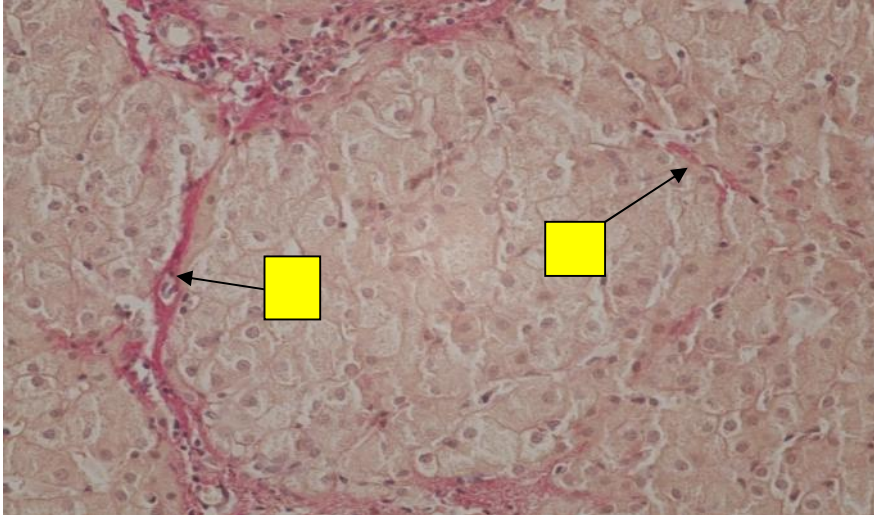
,



.2.
 14
 (
 400):
 -
 -
 -



.3.
 14
 (
 100):
 -
 -

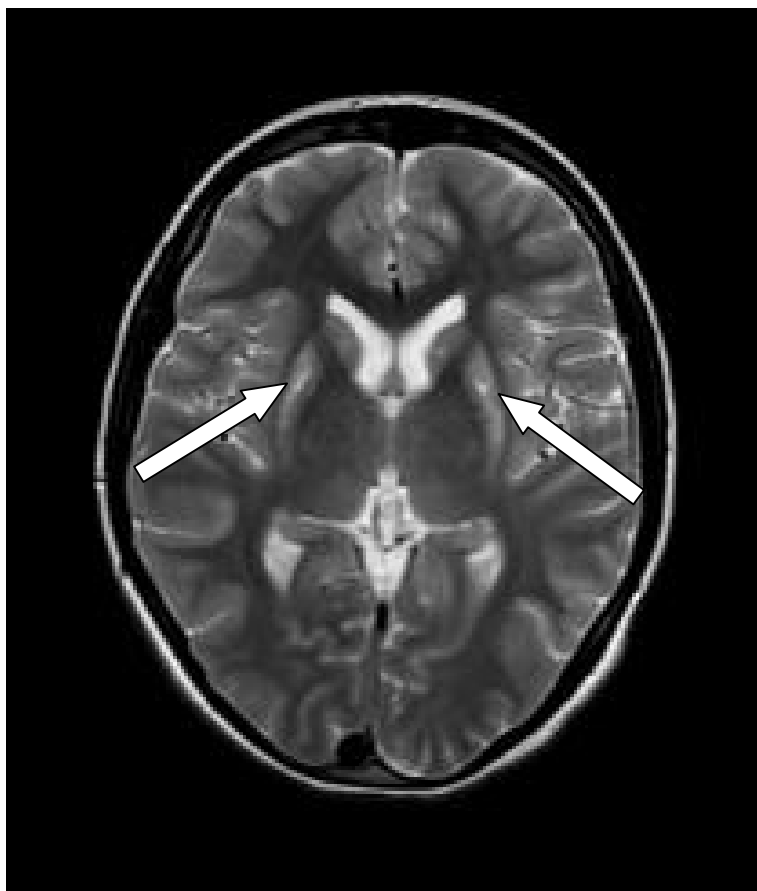


.4.
 9
 (
 400):
 -
 -
 -

2 1 (.2)

7-17%

10%



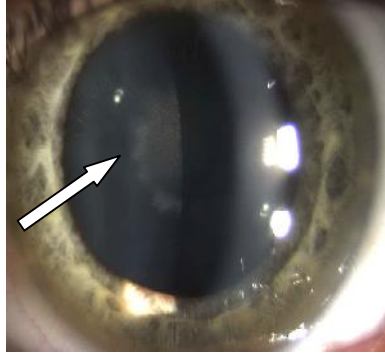
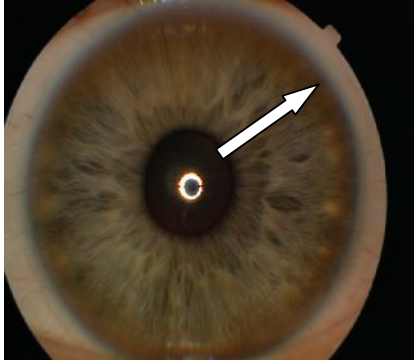
.5.

-2

11

« » (.3).

« ».



: - ()
14 . « » 14 .
: .6. - « »

10%.

1-12%

• NB! / 7 .
 100% 7) (100% ;
 100% ;
 VIII - .
 (16 - 18 2001 , ,)
 (.3).
 3.

I.		II.	
1. -	2 0	1. - - 1-2 - 2 - , 5	0 1 2 2
2. ()	2 0	2. - - 50-250 / 250 /	-1 1 2
3. -	1 0	3. - () 4. (20 /) - 10-20 - 10	0 1 2
III. (-)		(7)	4 1 0

4 : ;
 2-3: , ;
 0-1: .
 - ,
 . ,
 ,
 7 (.4).
 4.

()

	20		

.7.

; 24-h Cu -

(())

30 -

: 1

, 1

3

2

(, , , , ,) .

()

1

2

250-500 /

1000-1500 / (4-7)

250

20 / / 2-4

/

1-2

(Dhawan et al.),

11

5.

(Dhawan et al.)

	1	2	3	4
(/)	100-150	151-200	201-300	>300
(/)	100-150	151-300	301-400	>400
	1.3-1.6	1.7-1.9	2.0-2.4	>2.4
(10 ⁹)	6.8-8.3	8.4-10.3	10.4-15.3	>15.3
/	34-44	25-33	21-24	<21

*_

11